

## What is the challenge?

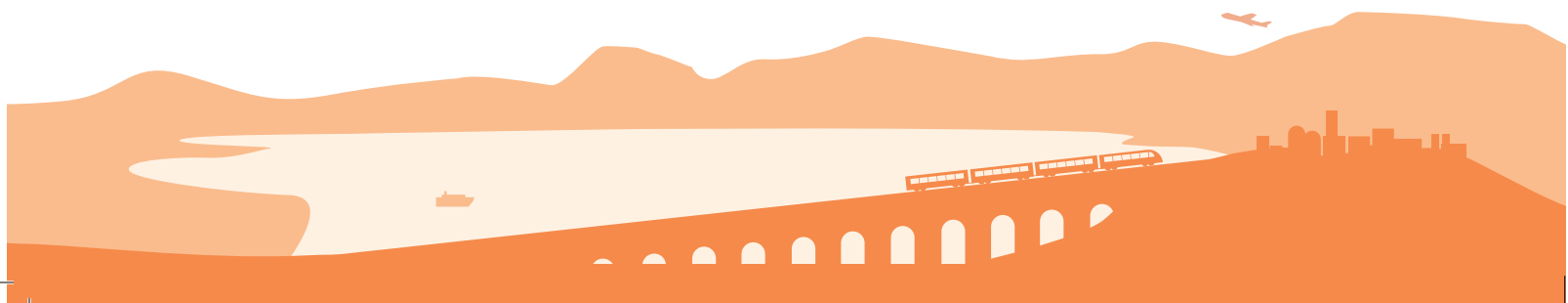
Citizens living in rural or peripheral areas of Central Europe are facing **inadequate connectivity, fragmented transportation networks, and lack of sustainable public transport solutions, particularly at cross-border level**. Leaving the car at home remains challenging for these people because there are often **no satisfying public transport offers** available.

## What is the goal?

European policies look toward a **greener and smarter future**, by supporting, among others, actions aimed at promoting the development of sustainable public transport solutions, while providing all citizens with **equal public transportation services and access opportunities**.

## What will SUSTANCE do about it?

The SUSTANCE project **involves a wide range of transport stakeholders** to better understand the accessibility of public transport in the involved regions as well as to co-design and **test innovative mobility services and governance schemes** that will **support public authorities in the planning process**. Innovative pilot actions are tested by partners in the involved regions and pave the way to the **adoption of long-term action plans and solutions**.



## Project partners



Central European Initiative - Executive Secretariat  
[www.cei.int](http://www.cei.int)

Institute for Transport and Logistics Foundation  
[www.fondazioneitl.org](http://www.fondazioneitl.org)

Győr-Sopron-Ebenfurth Railway Corp.  
[www.gysev.hu](http://www.gysev.hu)

Eurac research  
[www.eurac.edu/en](http://www.eurac.edu/en)

HZ Passenger Transport Ltd  
[www.hzpp.hr](http://www.hzpp.hr)

Istrian development agency – IDA Ltd  
[www.ida.hr](http://www.ida.hr)

Institute of Traffic and Transport Ljubljana Ilc  
[www.prometni-institut.si](http://www.prometni-institut.si)

Slovenian Railways – Passenger Transport Ltd  
[www.slo-zeleznice.si](http://www.slo-zeleznice.si)



## SUSTANCE

Sustainable public transport solutions and innovative governance schemes for improving connectivity in Central Europe



### Contact - Lead Partner

Central European Initiative  
Executive Secretariat

Via Genova 9  
34121 Trieste, Italy

Paolo Dileno  
[dileno@cei.int](mailto:dileno@cei.int)

2,01  
million €  
Project budget

8  
Partners

04.2023  
Start date

6  
Pilots

03.2026  
End date

80%  
ERDF co-financing



[www.interreg-central.eu/projects/sustance](http://www.interreg-central.eu/projects/sustance)



Sustance project

*Project is co-financed by the European Regional Development Fund, through Interreg Central Europe Programme*



SUSTANCE



How do people benefit?

**TRANSPORT SERVICE**

A new cross-border train service in 2024, connecting Italy (Trieste, Villa Opicina), via Slovenia (Divača, Pivka), with Croatia (Rijeka)

**ICT SERVICE**

Demand responsive transport application in Italy (Romagna Region), including ICT application for **planning, booking and e-ticketing**

**TRANSPORT SERVICE**

Extension until Sopron of the cross-border train service linking Austria (Neusiedl am See) with Hungary (Fertőszentmiklós)

**ICT SERVICE**

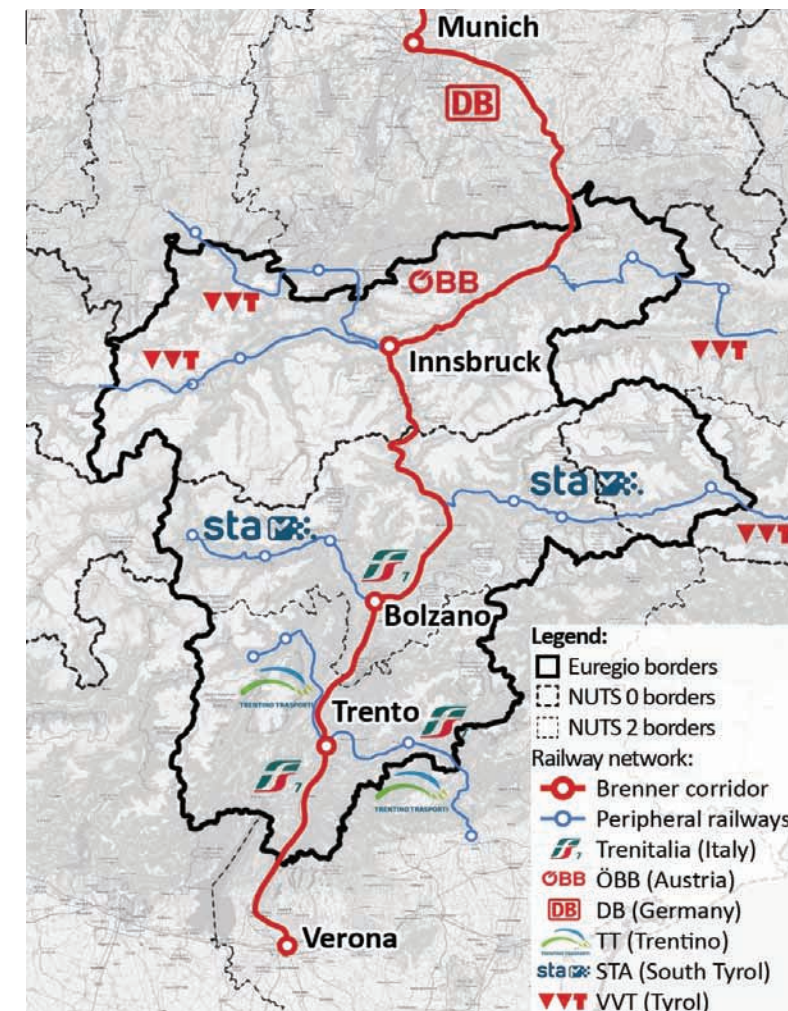
Interactive ICT app for Istria Region (Croatia), including all **private and public transport services** and displaying them in one place

**TRANSPORT SERVICE**

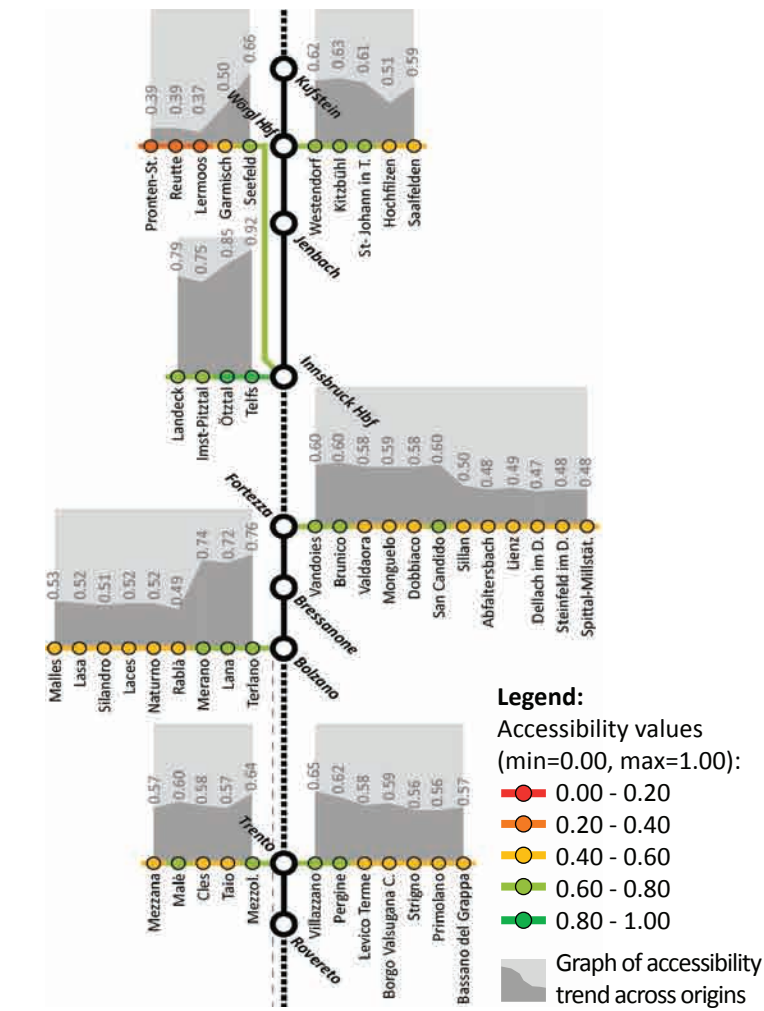
Feasibility study for the improvement of passenger train services between Croatia (Pula-Buzet) and Slovenia (Divača) and installation of **bike/scooter sharing points**

**ICT SERVICE**

Digital solution to promote and increase the use of **railway services and bicycles** in Croatia, Italy and Slovenia



**1. Focus**  
We place our attention on the peripheral public transport network of the Euregio



**2. Analysis**  
We analyse its public transport accessibility to the main nodes of the TEN-T Brenner corridor



**3. Result**  
We draft a Roadmap for the Euregio, by involving local stakeholders

