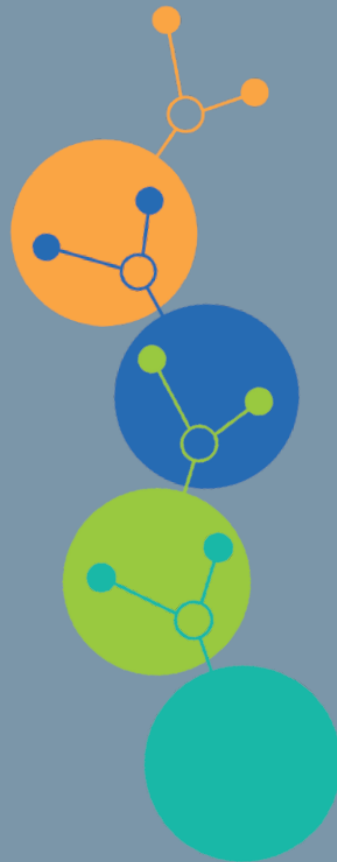




# CALL PREVIEW WEBINAR

*Online*

2 July 2024  
10.00 - 11.30



Slido.com

#InterregCECall



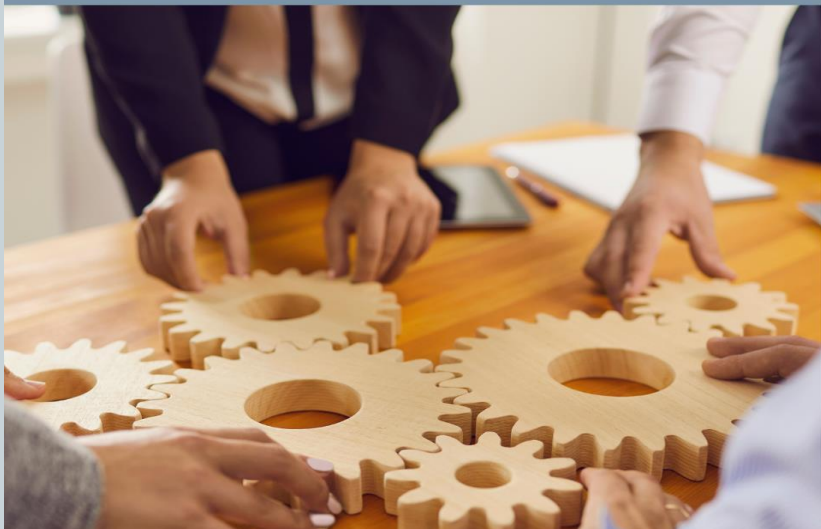
# Objective of the Call

---

# We have come a long way already, it's time to experiment

100

Interreg CENTRAL EUROPE cooperation projects supporting a smarter, greener, better connected and more integrated central Europe after two calls



[interreg-central.eu/project-gateway](https://interreg-central.eu/project-gateway)

## COUNTRIES & PARTNERS

AUSTRIA	104
CROATIA	97
CZECHIA	95
GERMANY	107
HUNGARY	116
ITALY	172
POLAND	124
SLOVAKIA	63
SLOVENIA	128

Interreg CENTRAL EUROPE  Co-funded by the European Union

220

million €  
Total budget of all approved projects

80%  
ERDF co-financing

1017

Partners

392

Pilots

380

Strategies

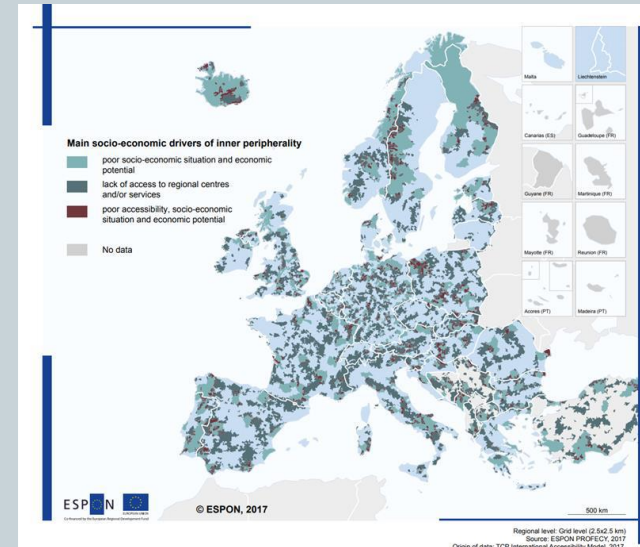
365

Solutions

# Focus on peripheral and lagging areas

The aim of the call is to *pioneer solutions for peripheral and lagging areas, making them more attractive places to live and work in.*

The central Europe area has structural differences and disparities, with more advanced & industrialised areas, as well as deprived & lagging behind areas facing lower competitiveness and shrinking populations.



# Call specificities and novelties



## Call specificities

The call has a **territorial** (peripheral and lagging areas) and **thematic focus** (4 specific objectives)



## Simplification

The call facilitates participation to transnational projects (**small-scale projects**)



## Hearings

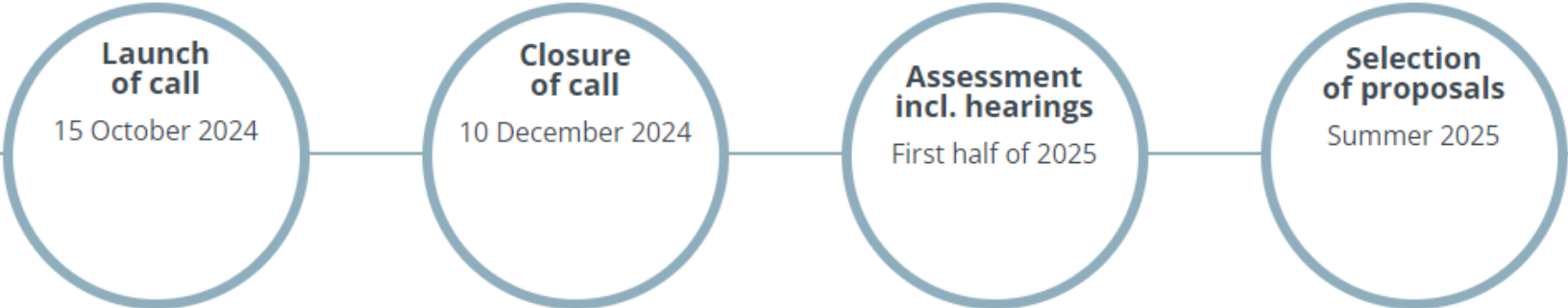
For the first time, promising proposals will be invited to online hearings in the assessment



## Budget

The call has an indicative ERDF allocation of **14 million EUR** (80% EU co-financing rate)

# Call timeline



# Applicant support measures



## Community

Online applicant community to facilitate project partner search and present project ideas



## Webinars

Digital events to introduce the call and opportunity for applicants to ask questions



## Explainers

Set of short videos introducing the key aspects of the call and the features of small-scale projects



## National support

Guidance and information by national contact points (NCPs) in national languages and application issues



## Individual consultations

Mandatory consultations (only after call launch) to provide guidance on project development and application requirements



The applicant community is available at <https://community.interreg-central.eu/>

The permanent helpdesk is available at [helpdesk@interreg-central.eu](mailto:helpdesk@interreg-central.eu)

# Territorial Focus

---

Main Features of the Call





Your proposal should clearly focus on  
**peripheral and lagging areas**

# Territorial characteristics

Targeted areas have to comply with **one or more of the following requirements:**

- Low economic potential
- Poor access to services of general interest (SGI), often affected by demographic change
- Lack of relational proximity, decline in significance, influence or connectivity

The size of areas depends on the project scope and could include local neighbourhoods, suburbs or city districts, villages and rural communities, small- or medium-sized towns, or entire regions

Characteristics of areas targeted by the project have to be clearly explained in the application form

# Thematic Focus

---

Main Features of the Call

# We focus the call on four specific objectives



Strengthen skills for smart specialisation,  
industrial transition and entrepreneurship (SO 1.2)



Green urban mobility (SO2.5)



Improve transport connections of peripheral and  
rural regions (SO 3.1)



Strengthen governance for integrated territorial  
development (SO 4.1)

# SO 1.2: Strengthening skills for smart specialisation, industrial transition and entrepreneurship in central Europe

**RECOMMENDED TOPICS**

Capital and skills development

Brain-drain, outmigration and the loss of skilled work force

Social entrepreneurship

Digital transition



## SO 2.5: Greening urban mobility in central Europe

### RECOMMENDED TOPICS



Sustainable multimodal connections in towns and their hinterlands



Accessibility of public transport for everyone in functional urban areas



Improving mobility in peri-urban areas, including villages, in a functional urban area approach

## SO 3.1: Improving transport connections of rural and peripheral regions in central Europe

### RECOMMENDED TOPICS



Sustainable passenger transport



Testing and improving regional mobility services in the public interest for the citizens

# SO 4.1: Strengthening governance for integrated territorial development in central Europe

## RECOMMENDED TOPICS



Demographic change



Provision of public services of general interest through integrated territorial approaches



# Specificities of Small-Scale Projects

---

Main Features of the Call

# Small-scale projects in a nutshell



## Objective

Clear emphasis on territorial challenges of peripheral and lagging areas



## Partnership

At least three partners from three countries, two of which are located in central Europe



## Duration

Between 12 and 24 months



## Budget

Up to 800.000 EUR total budget (maximum of 640.000 EUR ERDF)

# Partnership

- **Partnership size and transnationality**

- At least three partners from three countries out of which two are in the CE area (as in calls for classic projects)
- No recommended size (depending on project scope and considering budget limitations)

- **Partnership composition**

- No mandatory requirements - all types of institutions can apply
- Must be coherent with the territorial and thematic scope of the project (e.g. competencies, governance level, sectors, outreach to target groups etc.)
- Participation of local and regional actors is encouraged, i.e. public authorities (or related institutions), associations, civil society, NGOs, etc.
- Participation of research organisations should be limited (reflecting their main roles of knowledge providers or support to local/regional actors)

# Intervention logic

## ▪ Project objectives

- To be aligned with the thematic and territorial focus of the call
- Maximum 2 project specific objectives (one per work package)

## ▪ Project outputs

- Full set of output types (strategies, action plans, pilot actions, solutions, cooperations)
- Pilot actions
  - At least one (joint) pilot action at the local or regional level and a related solution
  - “Soft measures”, no investments > EUR 25.000 and no items under CC6 “infrastructure and works”
  - Implemented with strong involvement of local/regional stakeholders, according to a bottom-up and participatory approaches

## ▪ Project results

- Tangible and place-based, with a good upscaling potential
- Local dimension, with clear benefits for local communities and target groups
- Increased capacities of target groups