

In the land of pearl mussel and marsh fritillary: ReCo Pilot Action in Smrčiny Mountains, Czechia

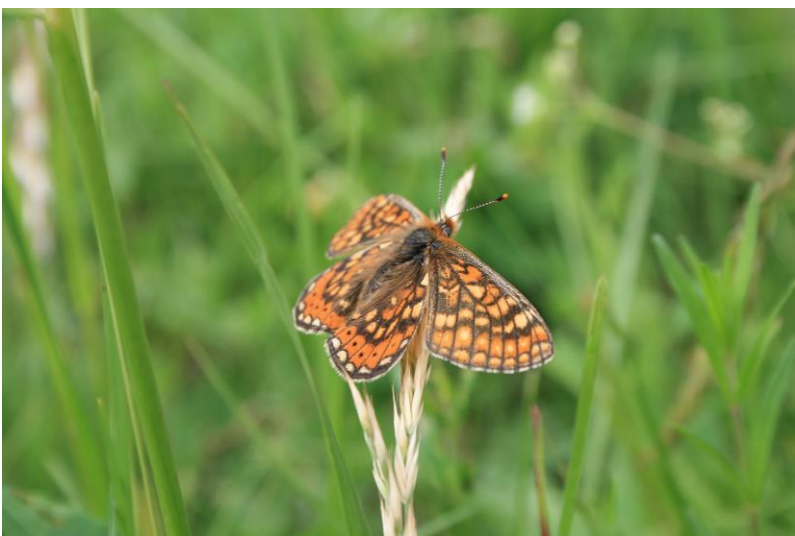
Transnational Focus Workshops

Enhancing ecological connectivity through habitat restoration –
key insights and lessons from the ReCo project

| 21st February 2025

Ametyst

Ondřej Volf



Smrčiny/Fichtelgebirge

Umbrella/flagship species

Freshwater pearl mussel

Marsh fritillary
....and many others

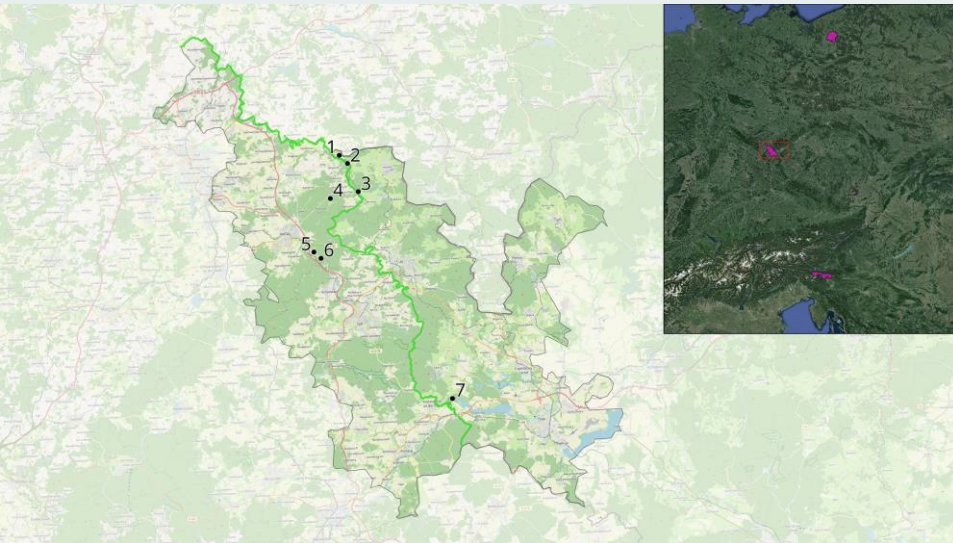
Common cross-border protected areas:

Lužní potok / Zinnbach

Smrčiny/Fichtelgebirge

Pilot Actions

Restoration of oligotrophic ecosystem of the whole river basin



1. Restoration of small tributaries and management of meadows

Target species: Freshwater pearl mussel, Marsh Fritillary

3. Renovation of the distribution facility on Lužní potok

Target species: The freshwater pearl mussel

Both actions are part of the approved Action plan for pearl mussel in the Czech Republic. Their aim is to improve the habitat status of both target species. Focused measures have been carried out in this area for several decades.

7. Meadows management

Target area: Wetland of Rathsam Nature Reserve

1 Restoration of small tributaries

Activity was done during November 2024



1. Renovation of the distribution facility on Lužní potok

Provision of water for the breeding element (side arm with suitable conditions for pearl mussel development)



...is ongoing



Target species: The freshwater pearl mussel



Target area: Lužní potok / Zinnbach

1. . Meadows management,
preparation for wetland revitalization
Nature Reserve Rathsam - completed

