

Regional Restoration Plans on Habitats

ReCo

Transnational Focus Workshops
21th February 2025

University of Vienna
Stefan Fuchs, MSc
Manuela Londoño Jiménez, MSc

VUKOZ
Mgr. Hana Skokanová, Ph.D.

Area of Study

European Green Belt - Central Europe

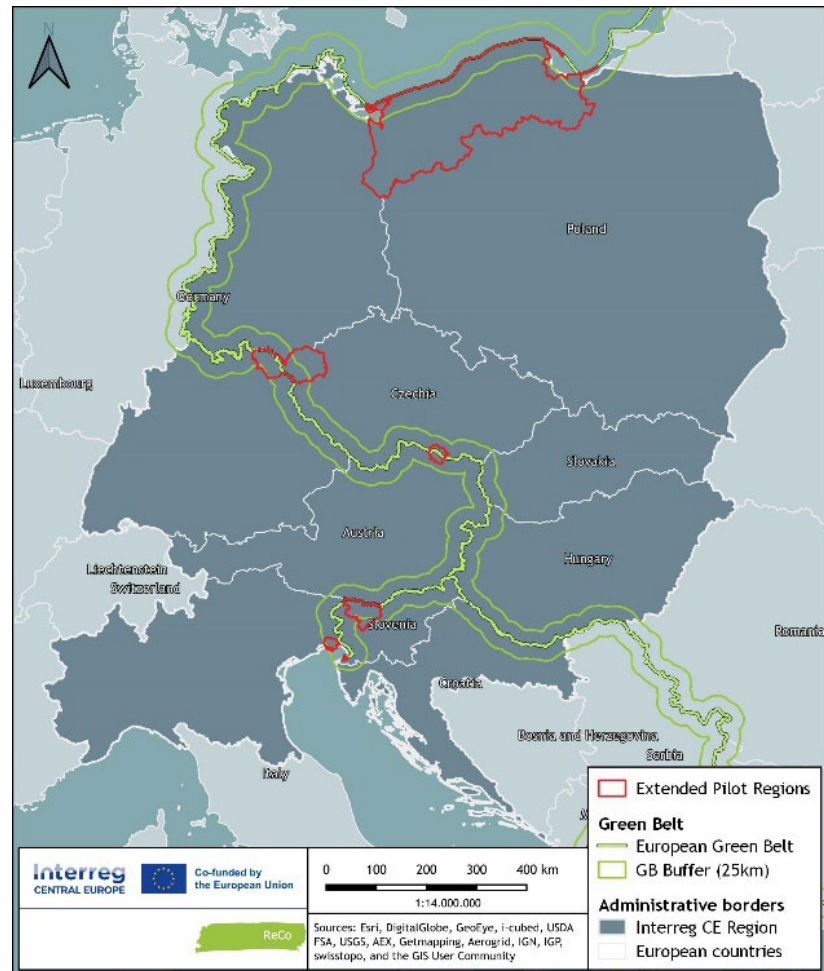
6 Pilot Regions

Habitats:

- Fichtelgebirge - Smrčiny Mountains (DE/CZ)
- Miramare Marine Protected Area (IT)
- Škocjanski zatok Nature Reserve (SL)
- Gorenjska Region (SL)

Species:

- Ińsko Lakeland (PL)
- National parks Thayatal & Podjji (AT/CZ)



Pilot Regions of the ReCo project – an overview (Author: Stefan Fuchs)

Jointly developed Regional Restoration plans on Habitats

Objective

- Enhance ecological interconnectivity & biodiversity of ecologically valuable habitats

Targeted Habitats

- Fichtelgebirge - Smrčiny Mountains (DE/CZ)
 - Wet meadows & moors, mountain streams and meadows
- Miramare Marine Protected Area (IT)
 - Dry grasslands
- Škocjanski zatok Nature Reserve (SL)
 - Marine and freshwater habitats
- Gorenjska Region (SL)
 - Mountain hay meadows



Škocjanski zatok Nature Reserve (SL) (© Jörg Schmiedel)



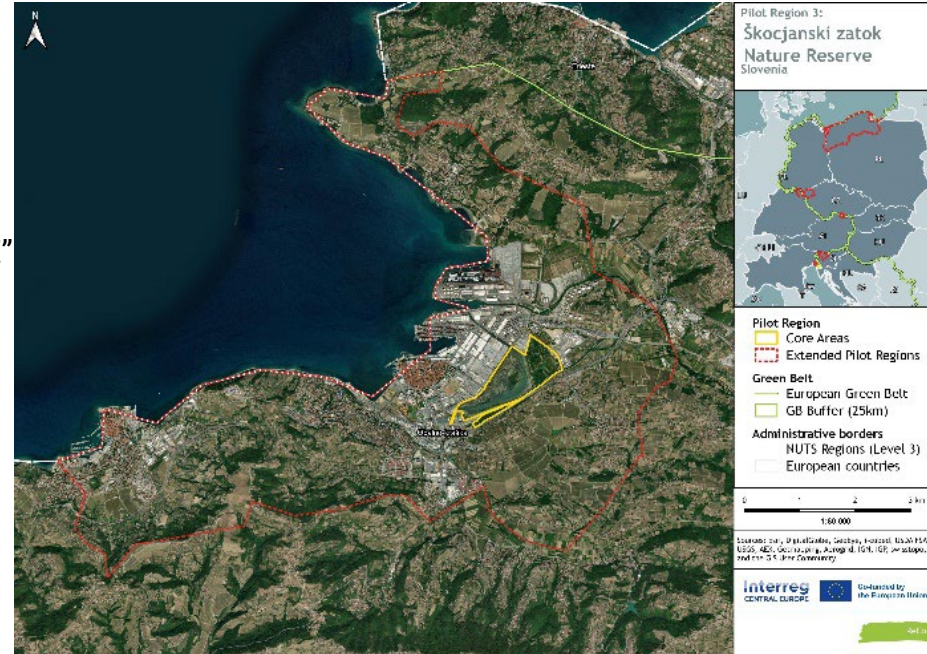
Jeseniky Mountains (CZ) (© Martin Kuba)

Approach

Integration of the results and findings of previous outputs:

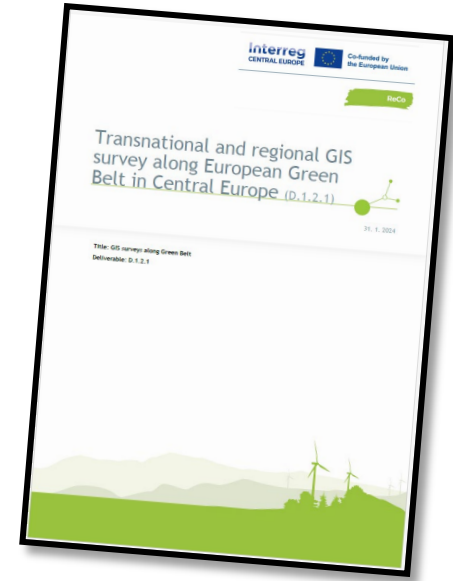
- GIS surveys along EGB in Central Europe
- Working Paper
“Proposals for targeted restoration actions along EGB CE”
- Transnational Atlas along the CE EGB
- Handbook on good practices of ecological restoration
- Work paper "Learning from peer reviews“

➔ Regional Restoration plans on Habitats



Transnational and regional GIS surveys along European Green Belt in Central Europe

- Data collection and integration.
- Geoinformation and data processing systems.
- Historical Analysis.
- Broader Habitat Type categorization.
- Landscape Change Analysis.



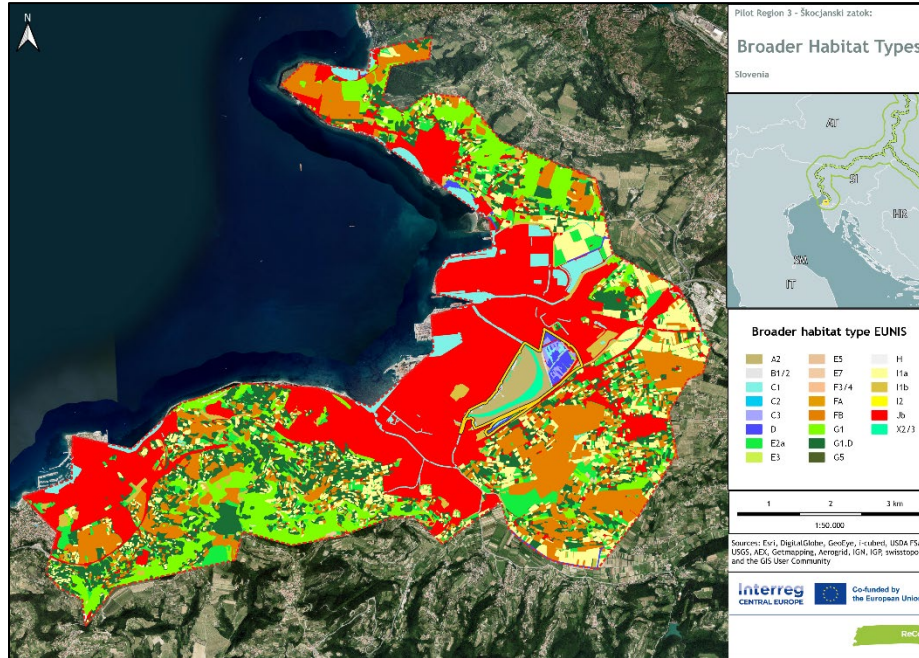
Data Sources integrated

Pilot region <i>Data source</i>	PR1 - Fichtelgebirge -Karlovarský kraj (DE/CZ)	PR2 - Miramare MPA (IT)	PR3 - Škocjanski zatok Nature Reserve (SI)	PR4 - Gorenjska region (SI)	PR5 - Ińsko Lakeland (PL)	PR6 - National Park Thayatal & Podyji (AT/CZ)
<i>CLC+ Backbone</i>	•	•		•	•	•
<i>Copernicus HRL</i>					•	
<i>Sentinel-2 data</i>	•					•
<i>Regional mapping data</i>	•	•	•	•		•

Methods

- Machine Learning classification via Automap (Sassik, 2020)
- Translation to Broader Habitat Type (BHT) EUNIS Level 2 (BUNCE et al. 2008, 2011)
- Datasets Merging

Broader Habitat Types



- A - Marine habitats
- A2 - Littoral sediment
- B1/2 - Coastal dunes and shingle
- C1 - Inland surface waters - standing
- C2 - Inland surface waters - watercourses
- C3 - Lithoral zone of inland waterbodies
- D - Mires, bogs and fens
- E1 - Dry grasslands
- E2a - Mesic grasslands, intensively managed
- E2b - Mesic grasslands, medium intensive
- E3 - Seasonally wet and wet grasslands
- E5 - Woodland fringes and clearings, tall forb stands
- F3/4 - Temperate and mediterranean-montane scrubs and heathland
- F9 - Riverine and fen scrubs
- G1 - Broadleaved deciduous woodland
- G1.D - Fruit and nut tree orchards
- G3 - Coniferous woodland
- G5 - Lines of trees, small anthropogenic woodlands, recently felled woodland, etc.
- H - Inland unvegetated or sparsely vegetated habitats
- I1a - Arable land and market gardens - intensive
- I1b - Arable land and market gardens - low intensity
- I2 - Cultivated areas of gardens and parks
- J4 - Transport networks and other constructed hard-surfaced areas
- Ja - Constructed, industrial and other artificial habitats - with significant green
- Jb - Constructed, industrial and other artificial habitats - high imperviousness

Historical Analysis

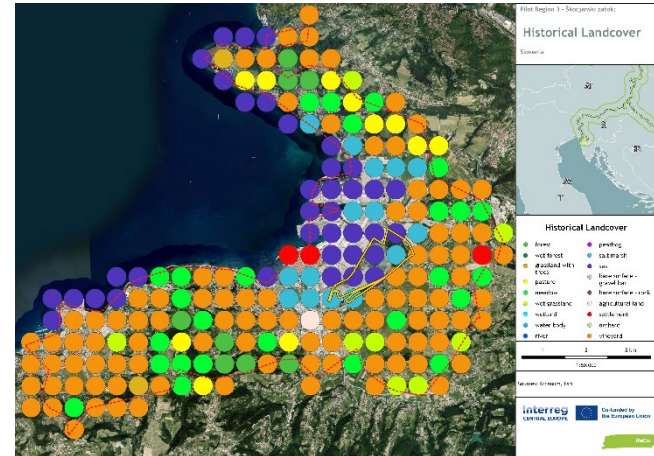
Arcanum maps &
Österreichisches Staatsarchiv
wmts or digitized raster map
sheets



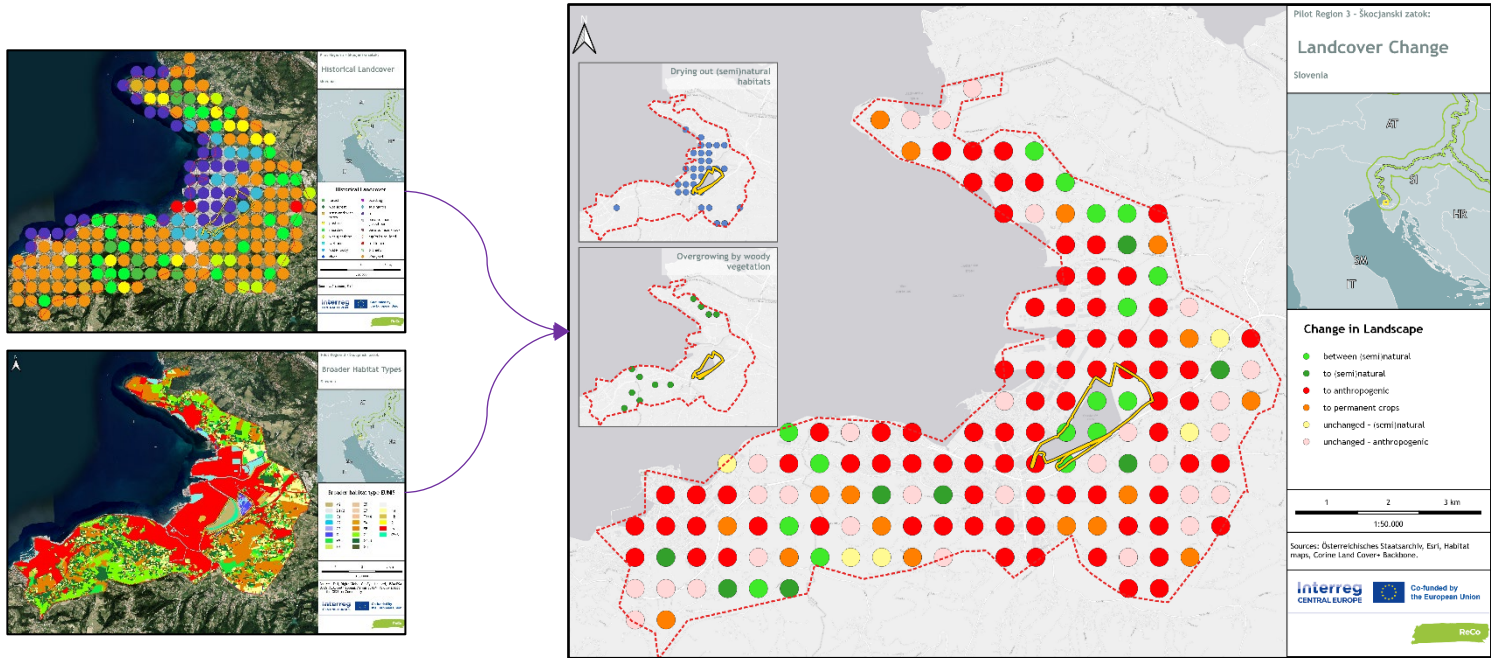
3rd Austrian military survey



- 3rd Austrian military survey
- Königreich Bayern survey
- Prussian military survey



Analysis of land cover change



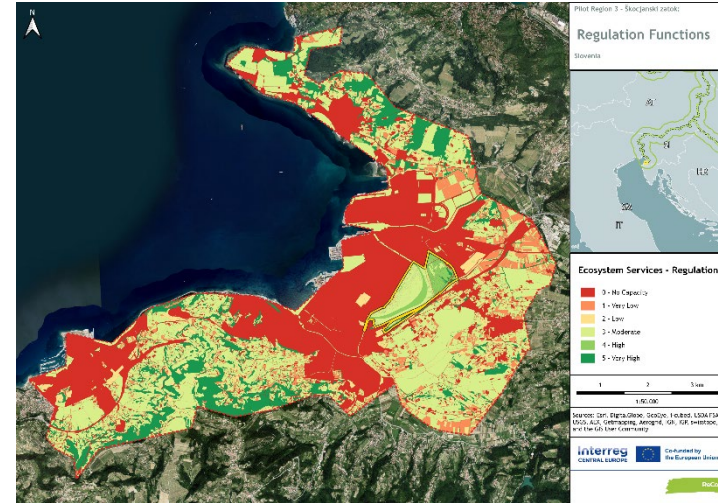
Ecosystem Services (ESS)

Value to each referenced land cover type depending on ESS

5 main Services – 30 single ESS

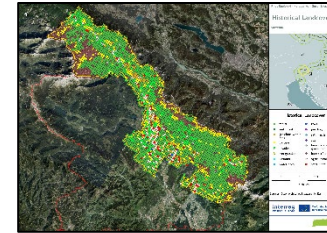
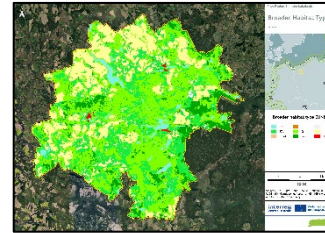
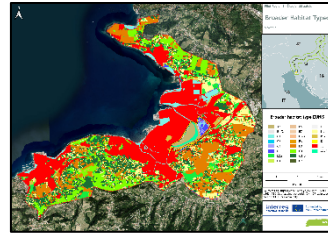
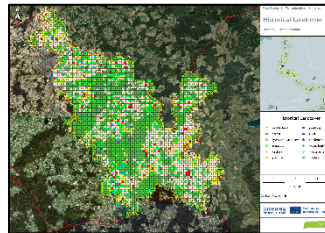
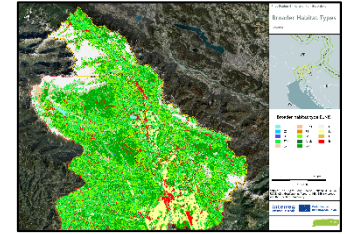
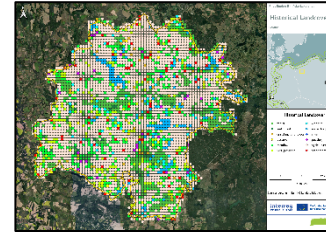
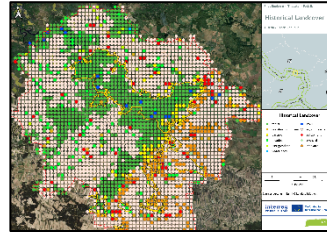
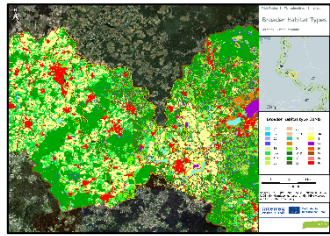
Ranked from No capacity (0) to Very high (5) capacity for provision

- Regulation functions
- Habitat functions
- Production functions
- Information functions
- Carrier functions



Transnational and regional GIS surveys along European Green Belt in Central Europe

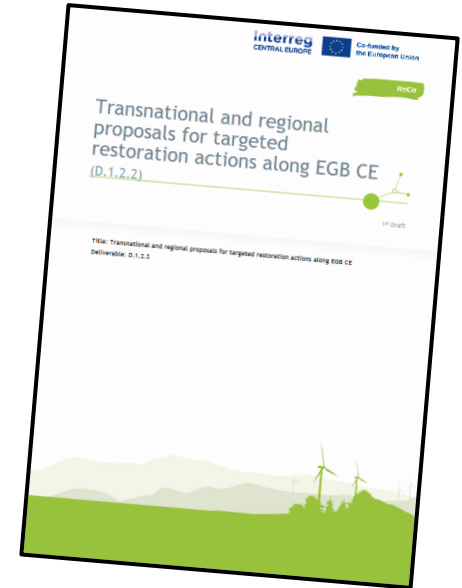
8 maps for each PR



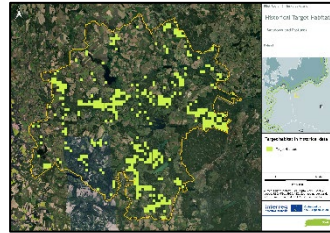
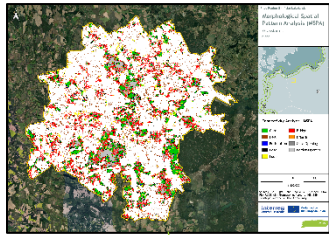
Working Paper

“Transnational and regional proposals for targeted restoration actions along EGB CE”

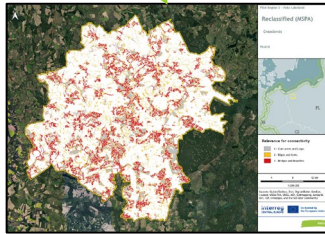
- Spatial Data Analysis
- Connectivity Analysis MSPA (Guidos Toolbox)
- Analysis Integration (BHT, Historical, Connectivity)
- Restoration Suitability Map



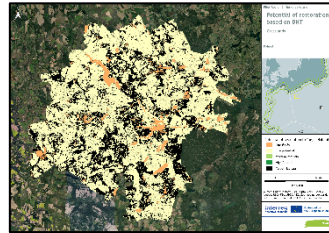
Restoration Suitability Maps



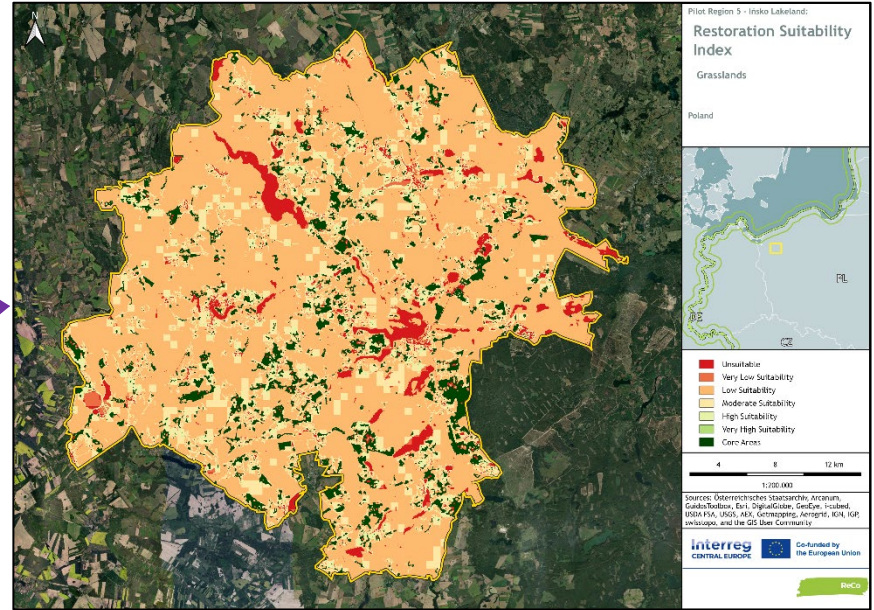
Historical Target Habitats



Reclassified MSPA

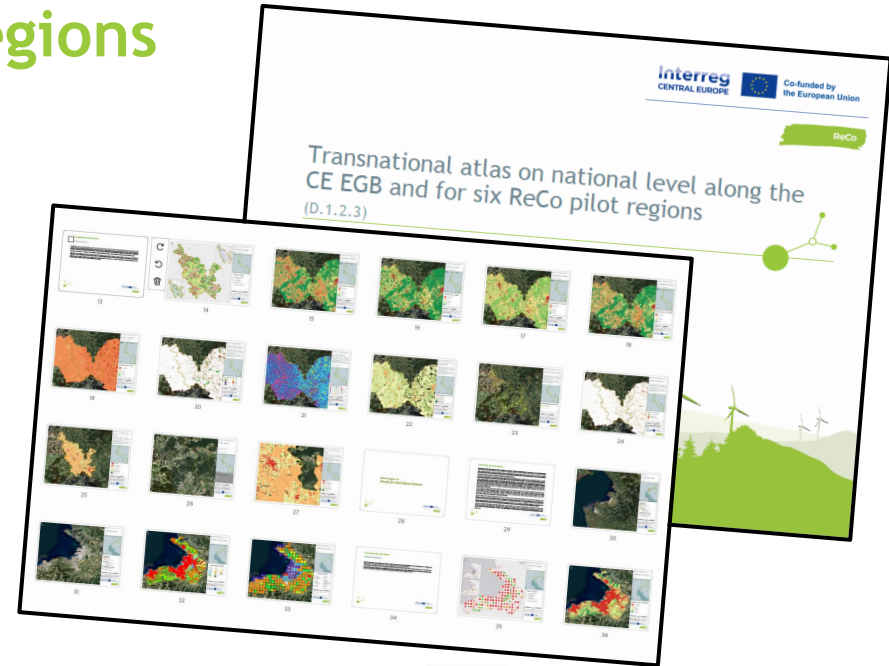


Restoration Potential based on BHT



Transnational atlas on national level along the CE EGB and for ReCo pilot regions

- Resulting maps from GIS Analysis
- At least 10 Maps / Pilot Region



Jointly developed Regional Restoration plans on Habitats (& Species)

- Existing GIS analysis, targeted restoration sites
- Additional specific Spatial Data Analysis
- Expert's knowledge of the region
- Existent development/management plans
- Involvement of stakeholders

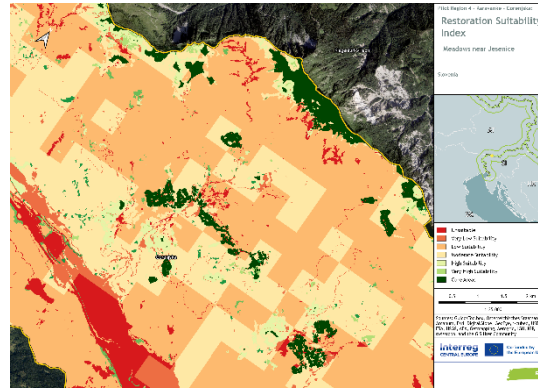


Jointly developed Regional Restoration plans on Habitats

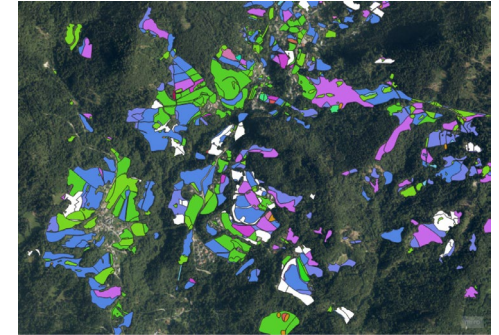
Example

PR4 - Gorenjska Region

- Identifying overused/abandoned meadows with potential for restoration (polygons of meadows in the 19th century)
- Narrow down potential sites for daffodil population (soil data)
- Foster a network of Slovenian & Austrian farmers
- Interactive awareness raising and information for the public (VR/AR experience, panels)



Restoration Suitability for Meadows



Meadows Classification

Landsat Collection

National Parks data base
National data sources



Satellite Data

Habitat

Environmental Variables

Occurrence

Citizen Science

iNaturalist

Genetic Data

Data Sources



Scientific community
Field studies

Threats & Human Impact

Migration Patterns

Surveys & models



European Environment Agency



Co-funded by the European Union



Project Acronym

Jointly developed Regional Restoration plans on Habitats

Structure & Content

- References to relevant documents (strategies & directives on the national & EU level)
- Description of the regional target habitats/species, status & vision
- Preceding restoration efforts & lessons learned
- Areas of Interest for Restoration
- Proposed restoration measures & objectives on selected areas
- Implementation Strategy (Stakeholder engagement, Financing options, Policy integration, Timeline)
- Monitoring, Evaluation & Adaptive Management
- Communication & Outreach

References

- BUNCE, R.G.H., BOGERS, M.M.B., ROCHE, P., WALCZAK, M., GEIJZENDORFFER, I.R., JONGMAN, R.H.G. 2011. Manual for Habitat and Vegetation Surveillance and Monitoring: Temperate, Mediterranean and Desert Biomes. First edition. Wageningen, Alterra report 2154. Accessed December 17, 2011. URL: <http://www.ebone.wur.nl/NR/rdonlyres/DADAAB1E-F07C-4AA3-8621-20548A9B7DE6/135332/report2154.pdf>.
- BUNCE, R.G.H., METZGER, M.J., JONGMAN, R.H.G., BRANDT, J., DE BLUST, G., ELENA-ROSSELLO, R., GROOM, G.B., HALADA, L., HOFER, G., HOWARD, D.C., KOVAR, P., MUCHER, C.A., PADOA-SCHIOPPA, E., PAELINX, D., PALO, A., PEREZ-SOBA, M., RAMOS, I., ROCHE, P., SKANES, H., WRBKA, T. 2008. A standardized procedure for surveillance and monitoring European habitats and provision of spatial data. *Landscape Ecol.* 23, 11–25.
- Danzinger, F., Drius, M., Fuchs, S., Wrbka, T., Marrs, C. (Ed., 2020). Manual of Green Infrastructure Functionality Assessment – Decision Support Tool. Interreg Central Europe Project MaGICLandscapes. Output O.T2.1, Vienna. With contributions from: F. Danzinger, M. Drius, S. Fuchs, T. Wrbka, C. Marrs, S. Alberico, G. Bovo, S. Ciadamidaro, M. Erlebach, D. Freudl, S. Grasso, Z. Jala, H. John, M. Minciardi, M. Neubert, G.L. Rossi, H. Skokanová, T. Slach, S. Riedl, P. Vayr, D. Wojnarowicz. Published online: <https://www.interreg-central.eu/Content.Node/MaGICLandscapes.html#Outputs>
- DE GROOT, R.S. 2006. Function-analysis and valuation as a tool to assess land use conflicts in planning for sustainable, multifunctional landscapes. *Land UrbPlann*, 75(3-4): 175–186.
- DE GROOT, R.S., WILSON, M.A., BOUMANS, R.M.J. 2002. A typology for the classification, description and valuation of ecosystem functions, goods and services. *Ecol Econ*, 41 (3): 393–408.
- European Space Agency 2018. CLC+Backbone 2018 (raster 10 m), Europe, 3-yearly. CLC+ Backbone. DOI: <https://doi.org/10.2909/cd534ebf-f553-42f0-9ac1-62c1dc36d32c>
- John, H., Neubert, M., Marrs, C. (eds.) (2019). GREEN INFRASTRUCTURE HANDBOOK - Conceptual & Theoretical Background, Terms and Definitions. First output of the Interreg Central Europe Project MaGICLandscapes - Managing Green Infrastructure in Central European Landscapes. With contributions from Henriette John, Christopher Marrs, Marco Neubert, Simonetta Alberico, Gabriele Bovo, Simone Ciadamidaro, Florian Danzinger, Martin Erlebach, David Freudl, Stefania Grasso, Anke Hahn, Zygmunt Jala, Ines Lasala, Mariarita Minciardi, Gian Luigi Rossi, Hana Skokanová, Tomáš Slach, Kathrin Uhlemann, Paola Vayr, Dorota Wojnarowicz, Thomas Wrbka. Published on-line <https://www.interreg-central.eu/Content.Node/MaGICLandscapes.html>
- LEITNER, H. & LEISSING, D. (2020):. Erstellung eines Wildkatzenkorridorplans im Wald-& Weinviertel in Österreich und den Kreisen Südböhmen und Südmähren in Tschechien. Im Auftrag der Nationalpark Thayatal GmbH. Klagenfurt, 55 S
- SASSIK B. (2020). Automap, ExoLabs GmbH, accessed: 25.01.2024, URL: <http://www.automap.ch>
- SKOKANOVÁ, H., HAVLÍČEK, M., BOROVEC, R., DEMEK, J., EREMIÁŠOVÁ, R., CHRUDINA, Z., MACKOVČIN, P., RYSKOVÁ, R., SLAVÍK, P., STRÁNSKÁ T., SVOBODA, J. 2012. Development of land use and main land usechange processes in the period 1836–2006: case study in the Czech Republic. *Journal of Maps*: 88-96. DOI:doi.org/10.1080/17445647.2012.668768
- SOILLE, P. AND VOGT, P. (2009). Morphological segmentation of binary patterns. *Pattern Recognition Letters* 30, 4:456-459, doi: 10.1016/j.patrec.2008.10.015SOILLE, P. AND VOGT, P. (2022). Morphological spatial pattern analysis: open source release. *The International Archives of the Photogrammetry, Remote Sensing and Spatial Information Sciences*, VolumeXLVIII-4/W1-2022 Free and Open Source Software for Geospatial (FOSS4G) 2022 – Academic Track, 22–28August 2022, Florence, Italy. pp. 427-433, doi: doi.org/10.5194/isprs-archives-XLVIII-4-W1-2022-427-2022



University of Vienna,
Dept. of Botany and Biodiversity Research,
Biodiversity Dynamics and Conservation Group



<https://bdc.univie.ac.at/>



manuela.londono.jimenez@univie.ac.at
stefan.a.fuchs@univie.ac.at



<https://www.facebook.com/UniversityofViennaBDC>

